



REPORT OF THIRD-PARTY INSPECTION

TÜV SÜD Certification and Testing (China) Co., Ltd. Shanghai Branch

Report No. & Version: 332618, Rev.00

Order No.: 7482605975

Applicant: Hebei Abter Steel Pipe Co., Ltd

Address: /

Manufacturer: Hebei Abter Steel Pipe Co., Ltd

Address: Mengcun country, cangzhou city, Hebei Province, China

Contact Person: Mr. Huang

Inspection Place: Yanshan country, cangzhou city, Hebei Province, China

Inspector: Zhang Yonglin

Department: IS

PO No: /

Floor 3-13, No.151, Heng Tong Road,
Shanghai, P. R. China
Tel.: +86(0) 21 6141 0123
Fax: +86(0) 21 6140 8600
Internet: www.tuvsud.cn
Email: ye.shen@tuvsud.com

The Report may only be quoted in full. Any use for advertising purposes must be granted in writing.

The test results refer exclusively to the units under test.



Revisions

Revision	Date	Changes
00	2025.12.18	First Issue

This report supersedes any previous revisions.

**Product/Article List**

Item No.	description	Quantity	
		m	pcs
1	Casing pipe L80-1 7" 26PPF BTC R3	1694.00	314.00
2	Casing pipe L80-1 4 1/2" 11.6PPF BTC R3	1667.00	146.00
3	Tubing L80-1 2 7/8" 6.5PPF EUE R2	3000.00	145.00
4	Pup joint L80-1 7" 26PPF BTC BOX x PIN 3m/pcs	9.00	3.00
5	Pup joint L80-1 7" 26PPF BTC BOX x PIN 6m/pcs	18.00	3.00
6	Pup joint L80-1 4 1/2" 11.6PPF BTC BOX x PIN 0.5m/pcs	3.00	6.00
7	Pup joint L80-1 4 1/2" 11.6PPF BTC BOX x PIN 1m/pcs	24.00	24.00
8	Pup joint L80-1 4 1/2" 11.6PPF BTC BOX x PIN 2m/pcs	12.00	6.00
9	Pup joint L80-1 4 1/2" 11.6PPF BTC BOX x PIN 3m/pcs	18.00	6.00
10	Pup joint L80-1 4 1/2" 11.6PPF BTC BOX x PIN 6m/pcs	36.00	6.00
11	Pup joint L80-1 2 7/8" 6.5PPF EUE BOX x PIN 1m/pcs	6.00	6.00
12	Pup joint L80-1 2 7/8" 6.5PPF EUE BOX x PIN 1.5m/pcs	9.00	6.00
13	Pup joint L80-1 2 7/8" 6.5PPF EUE BOX x PIN 3m/pcs	18.00	6.00
14	Pup joint L80-1 2 7/8" 6.5PPF EUE BOX x PIN 6m/pcs	36.00	6.00
15	Pup joint L80-1 2 7/8" 6.5PPF EUE PIN x PIN 1m/pcs	2.00	2.00

Nature of Inspection:

1. Visual and dimension inspection 20%
2. Packing and marking checks. Marking must meet API 5CT standard. 20%
3. Threading checks. 20%
4. Triangles checks. 20%
5. Concentricity (drift diameter) checks. 20%
6. MTC shall be reviewed
7. Pipe Length checks. 20%.



According to client's requirement inspector performed the above inspection at Hebei Abter steel pipe Co., Ltd according to standard requirements. The result was acceptable.

1. Visual and dimension inspection

-visual inspection

TÜV SÜD inspector checked the visual of the pipes at randomly 20%, during inspection there have no obvious defects was found, such as knocked damage at pipe end, scratches on surface or dents, the result was acceptable

-Dimension inspection

TÜV SÜD inspector witnessed dimension for casing pipes at randomly20%, the inspection item includes OD, WT, length, coupling length values according to the relevant standard requirement, all the measurement value were in the standard requirement range, the details as below table1:

table1:

size	Casing pipe L80-1 7" 26PPF BTC R3 177.8x9.19mm	OD(mm)	thickness(mm)	coupling OD(mm)	coupling length(mm)	Triangle A1
tolerance		±1%	±12.5%	200.032±2	≥254	114.3±0.79
actual measured		178.8-179.2	9.0-9.6	200.0-200.5	255	114.3-114.4
size	Casing pipe L80-1 4 1/2" 11.6PPF BTC 114.3x6.35mm	OD(mm)	thickness(mm)	coupling OD(mm)	coupling length(mm)	Triangle A1
tolerance		±1%	±12.5%	133.35±1.33	≥225.42	100.01±0.79
actual measured		114.3-114.6	6.2-7.0	133.5-133.6	226-227	100.1-100.3
size	Tubing L80-1 2 7/8" 6.5PPF EUE R2BTC 73x5.51mm	OD(mm)	thickness(mm)	coupling OD(mm)	coupling length(mm)	Triangle A1
tolerance		±1%	±12.5%	93.17±0.93	≥133.35	/
actual measured		73.1-73.6	5.4-5.8	93.5-94.0	134	/
size	Casing pipe L80-1 7" 26PPF BTC R3 177.8x9.19mm	OD(mm)	thickness(mm)	coupling OD(mm)	coupling length(mm)	Triangle A1
tolerance		±1%	±12.5%	200.032±2	≥254	114.3±0.79
actual measured		178.8-179.2	9.0-9.6	200.0-200.5	255	114.3
size	Casing pipe L80-1 7" 26PPF BTC R3 177.8x9.19mm	OD(mm)	thickness(mm)	coupling OD(mm)	coupling length(mm)	Triangle A1
tolerance		±1%	±12.5%	200.032±2	≥254	114.3±0.79
actual measured		178.8-179.2	9.0-9.6	200.0-200.5	255	114.3
size	Pup joint L80-1 4 1/2" 11.6PPF BTC BOX x PIN 0.5m/pcs 114.3x6.35mm	OD(mm)	thickness(mm)	coupling OD(mm)	coupling length(mm)	Triangle A1
tolerance		±1%	±12.5%	133.35±1.33	≥225.42	100.01±0.79
actual measured		114.3-114.6	6.2-7.0	133.5-133.8	226-227	100.1-100.3



size	Pup joint L80-1 4 1/2" 11.6PPF BTC BOX x PIN 1m/pcs 114.3x6.35mm	OD(mm)	thickness(mm)	coupling OD(mm)	coupling length(mm)	Triangle A1
tolerance		±1%	±12.5%	133.35±1.33	≥225.42	100.01±0.79
actual measured		114.3-114.6	6.2-7.0	133.5-133.8	226-227	100.1-100.3
size	Pup joint L80-1 4 1/2" 11.6PPF BTC BOX x PIN 2m/pcs 114.3x6.35mm	OD(mm)	thickness(mm)	coupling OD(mm)	coupling length(mm)	Triangle A1
tolerance		±1%	±12.5%	133.35±1.33	≥225.42	100.01±0.79
actual measured		114.3-114.6	6.2-7.0	133.5-133.8	226-227	100.1-100.3
size	Pup joint L80-1 4 1/2" 11.6PPF BTC BOX x PIN 3m/pcs 114.3x6.35mm	OD(mm)	thickness(mm)	coupling OD(mm)	coupling length(mm)	Triangle A1
tolerance		±1%	±12.5%	133.35±1.33	≥225.42	100.01±0.79
actual measured		114.3-114.6	6.2-7.0	133.5-133.8	226-227	100.1-100.3
size	Pup joint L80-1 4 1/2" 11.6PPF BTC BOX x PIN 6m/pcs 114.3x6.35mm	OD(mm)	thickness(mm)	coupling OD(mm)	coupling length(mm)	Triangle A1
tolerance		±1%	±12.5%	133.35±1.33	≥225.42	100.01±0.79
actual measured		114.3-114.6	6.2-7.0	133.5-133.8	226-227	100.1-100.3
size	Pup joint L80-1 2 7/8" 6.5PPF EUE PIN x PIN 73.02x5.51mm 1m/pcs	OD(mm)	thickness(mm)	coupling OD(mm)	coupling length(mm)	Triangle A1
tolerance		±1%	±12.5%	93.17±0.93	≥133.35	/
actual measured		73.1-73.6	5.4-5.8	93.5-94.0	134	/
size	Pup joint L80-1 2 7/8" 6.5PPF EUE PIN x PIN 73.02x5.51mm 1.5m/pcs	OD(mm)	thickness(mm)	coupling OD(mm)	coupling length(mm)	Triangle A1
tolerance		±1%	±12.5%	93.17±0.93	≥133.35	/
actual measured		73.1-73.6	5.4-5.8	93.5-94.0	134	/
size	Pup joint L80-1 2 7/8" 6.5PPF EUE PIN x PIN 73.02x5.51mm 3m/pcs	OD(mm)	thickness(mm)	coupling OD(mm)	coupling length(mm)	Triangle A1
tolerance		±1%	±12.5%	93.17±0.93	≥133.35	/
actual measured		73.1-73.6	5.4-5.8	93.5-94.0	134	/
size	Pup joint L80-1 2 7/8" 6.5PPF EUE PIN x PIN 73.02x5.51mm 6m/pcs	OD(mm)	thickness(mm)	coupling OD(mm)	coupling length(mm)	Triangle A1
tolerance		±1%	±12.5%	93.17±0.93	≥133.35	/
actual measured		73.1-73.6	5.4-5.8	93.5-94.0	134	/
size	Pup joint L80-1 2 7/8" 6.5PPF EUE PIN x PIN 73.02x5.51mm 1m/pcs	OD(mm)	thickness(mm)	coupling OD(mm)	coupling length(mm)	Triangle A1
tolerance		±1%	±12.5%	93.17±0.93	≥133.35	/
actual measured		73.1-73.6	5.4-5.8	93.5-94.0	134	/

The results of the dimension inspection was satisfactory.



2. Packing and marking checks. Marking must meet API 5CT standard. 20%

Packing inspection

TÜV SÜD inspector checked the packing of the casing pipes and pipe joints, every casing pipes and pup joint were packed with steel belts or packed into the wooden boxes, every package end has one easy lifting belts, the packing condition were in good.

Marking inspection

TÜV SÜD inspector checked the packing of the casing pipes and pipe joints, the details as below:

For example:

ABT 5CT-2175 API logo 511 4 1/2" 11.6PPF 2M 5TW571WB 5TW571WB2010

The results of the packing and marking checks was satisfactory.

3. Threading checks 20%

TÜV SÜD inspector checked the threading dimension according to the API 5B and API 5CT requirement, The details as below:

-For pipe end

size	Casing pipe L80-1 7" 26PPF BTC R3 177.8x9.19mm	taper (in/in)	tooth height(mm)	thread pitch(mm)	thread standoff(mm)
tolerance		0.061-0.066	1.57±0.0254	±0.05	0-2.54
actual measured		0.062-0.064	1.57-1.59	-0.01~+0.01	0.5-2.3
size	Casing pipe L80-1 4 1/2" 11.6PPF BTC 114.3x6.35mm	taper (in/in)	tooth height(mm)	thread pitch(mm)	thread standoff(mm)
tolerance		0.061-0.066	1.57±0.0254	±0.05	0-2.54
actual measured		0.062-0.064	1.57-1.59	-0.01~+0.01	0.7-1.87
size	Tubing L80-1 2 7/8" 6.5PPF EUE R2BTC 73x5.51mm	taper (in/in)	tooth height(mm)	thread pitch(mm)	thread standoff(mm)
tolerance		0.059-0.066	1.81 (-0.1,+0.05)	±0.08	0~3.175
actual measured		0.062-0.064	1.80-1.59	-0.01~+0.01	0.37-1.13
size	Casing pipe L80-1 7" 26PPF BTC R3 177.8x9.19mm	taper (in/in)	tooth height(mm)	thread pitch(mm)	thread standoff(mm)
tolerance		0.061-0.066	1.57±0.0254	±0.05	0-2.54
actual measured		0.062-0.064	1.57-1.59	-0.01~+0.01	0.5-2.3



size	Casing pipe L80-1 7" 26PPF BTC R3 177.8x9.19mm	taper (in/in)	tooth height(mm)	thread pitch(mm)	thread standoff(mm)
tolerance		0.061-0.066	1.57±0.0254	±0.05	0-2.54
actual measured		0.062-0.064	1.57-1.59	-0.01~+0.01	0.5-2.3
size	Pup joint L80-1 4 1/2" 11.6PPF BTC BOX x PIN 0.5m/pcs 114.3x6.35mm	taper (in/in)	tooth height(mm)	thread pitch(mm)	thread standoff(mm)
tolerance		0.061-0.066	1.57±0.0254	±0.05	0-2.54
actual measured		0.062-0.064	1.57-1.59	-0.01~+0.01	0.7-1.87
size	Pup joint L80-1 4 1/2" 11.6PPF BTC BOX x PIN 1m/pcs 114.3x6.35mm	taper (in/in)	tooth height(mm)	thread pitch(mm)	thread standoff(mm)
tolerance		0.061-0.066	1.57±0.0254	±0.05	0-2.54
actual measured		0.062-0.064	1.57-1.59	-0.01~+0.01	0.7-1.87
size	Pup joint L80-1 4 1/2" 11.6PPF BTC BOX x PIN 2m/pcs 114.3x6.35mm	taper (in/in)	tooth height(mm)	thread pitch(mm)	thread standoff(mm)
tolerance		0.061-0.066	1.57±0.0254	±0.05	0-2.54
actual measured		0.062-0.064	1.57-1.59	-0.01~+0.01	0.7-1.87
size	Pup joint L80-1 4 1/2" 11.6PPF BTC BOX x PIN 3m/pcs 114.3x6.35mm	taper (in/in)	tooth height(mm)	thread pitch(mm)	thread standoff(mm)
tolerance		0.061-0.066	1.57±0.0254	±0.05	0-2.54
actual measured		0.062-0.064	1.57-1.59	-0.01~+0.01	0.7-1.87
size	Pup joint L80-1 4 1/2" 11.6PPF BTC BOX x PIN 6m/pcs 114.3x6.35mm	taper (in/in)	tooth height(mm)	thread pitch(mm)	thread standoff(mm)
tolerance		0.061-0.066	1.57±0.0254	±0.05	0-2.54
actual measured		0.062-0.064	1.57-1.59	-0.01~+0.01	0.7-1.87
size	Pup joint L80-1 2 7/8" 6.5PPF EUE PIN x PIN 73.02x5.51mm 1m/pcs	taper (in/in)	tooth height(mm)	thread pitch(mm)	thread standoff(mm)
tolerance		0.059-0.066	1.81 (-0.1,+0.05)	±0.08	0~3.175
actual measured		0.062-0.064	1.80-1.59	-0.01~+0.01	0.37-1.13
size	Pup joint L80-1 2 7/8" 6.5PPF EUE PIN x PIN 73.02x5.51mm 1.5m/pcs	taper (in/in)	tooth height(mm)	thread pitch(mm)	thread standoff(mm)
tolerance		0.059-0.066	1.81 (-0.1,+0.05)	±0.08	0~3.175
actual measured		0.062-0.064	1.80-1.59	-0.01~+0.01	0.37-1.13
size	Pup joint L80-1 2 7/8" 6.5PPF EUE PIN x PIN 73.02x5.51mm 3m/pcs	taper (in/in)	tooth height(mm)	thread pitch(mm)	thread standoff(mm)
tolerance		0.059-0.066	1.81 (-0.1,+0.05)	±0.08	0~3.175
actual measured		0.062-0.064	1.80-1.59	-0.01~+0.01	0.37-1.13



size	Pup joint L80-1 2 7/8" 6.5PPF EUE PIN x PIN 73.02x5.51mm 6m/pcs	taper (in/in)	tooth height(mm)	thread pitch(mm)	thread standoff(mm)
tolerance		0.059-0.066	1.81 (-0.1,+0.05)	±0.08	0~3.175
actual measured		0.062-0.064	1.80-1.59	-0.01~+0.01	0.37-1.13
size	Pup joint L80-1 2 7/8" 6.5PPF EUE PIN x PIN 73.02x5.51mm 1m/pcs	taper (in/in)	tooth height(mm)	thread pitch(mm)	thread standoff(mm)
tolerance		0.059-0.066	1.81 (-0.1,+0.05)	±0.08	0~3.175
actual measured		0.062-0.064	1.80-1.59	-0.01~+0.01	0.37-1.13

For coupling end

size	Casing pipe L80-1 7" 26PPF BTC R3 177.8x9.19mm	taper (in/in)	tooth height(mm)	thread pitch(mm)	thread standoff(mm)
tolerance		0.061-0.066	1.57±0.0254	±0.05	2.54-5.08
actual measured		0.062-0.064	1.57-1.59	-0.01~+0.01	2.9-4.8
size	Casing pipe L80-1 4 1/2" 11.6PPF BTC 114.3x6.35mm	taper (in/in)	tooth height(mm)	thread pitch(mm)	thread standoff(mm)
tolerance		0.061-0.066	1.57±0.0254	±0.05	0-2.54
actual measured		0.062-0.064	1.57-1.59	-0.01~+0.01	1.89-2.36
size	Tubing L80-1 2 7/8" 6.5PPF EUE R2BTC 73x5.51mm	taper (in/in)	tooth height(mm)	thread pitch(mm)	thread standoff(mm)
tolerance		0.059-0.066	1.81 (-0.1,+0.05)	±0.08	6.35±3.175
actual measured		0.062-0.064	1.80-1.59	-0.01~+0.01	4.98-5.45
size	Casing pipe L80-1 7" 26PPF BTC R3 177.8x9.19mm	taper (in/in)	tooth height(mm)	thread pitch(mm)	thread standoff(mm)
tolerance		0.061-0.066	1.57±0.0254	±0.05	2.54-5.08
actual measured		0.062-0.064	1.57-1.59	-0.01~+0.01	2.9-4.8
size	Casing pipe L80-1 7" 26PPF BTC R3 177.8x9.19mm	taper (in/in)	tooth height(mm)	thread pitch(mm)	thread standoff(mm)
tolerance		0.061-0.066	1.57±0.0254	±0.05	2.54-5.08
actual measured		0.062-0.064	1.57-1.59	-0.01~+0.01	2.9-4.8
size	Pup joint L80-1 4 1/2" 11.6PPF BTC BOX x PIN 0.5m/pcs 114.3x6.35mm	taper (in/in)	tooth height(mm)	thread pitch(mm)	thread standoff(mm)
tolerance		0.061-0.066	1.57±0.0254	±0.05	0-2.54
actual measured		0.062-0.064	1.57-1.59	-0.01~+0.01	1.89-2.36
size	Pup joint L80-1 4 1/2" 11.6PPF BTC BOX x PIN 1m/pcs 114.3x6.35mm	taper (in/in)	tooth height(mm)	thread pitch(mm)	thread standoff(mm)
tolerance		0.061-0.066	1.57±0.0254	±0.05	0-2.54
actual measured		0.062-0.064	1.57-1.59	-0.01~+0.01	1.89-2.36



tolerance		0.061-0.066	1.57±0.0254	±0.05	0-2.54
actual measured		0.062-0.064	1.57-1.59	-0.01~+0.01	1.89-2.36
size	Pup joint L80-1 4 1/2" 11.6PPF BTC BOX x PIN 2m/pcs 114.3x6.35mm	taper (in/in)	tooth height(mm)	thread pitch(mm)	thread standoff(mm)
tolerance		0.061-0.066	1.57±0.0254	±0.05	0-2.54
actual measured		0.062-0.064	1.57-1.59	-0.01~+0.01	1.89-2.36
size	Pup joint L80-1 4 1/2" 11.6PPF BTC BOX x PIN 3m/pcs 114.3x6.35mm	taper (in/in)	tooth height(mm)	thread pitch(mm)	thread standoff(mm)
tolerance		0.061-0.066	1.57±0.0254	±0.05	0-2.54
actual measured		0.062-0.064	1.57-1.59	-0.01~+0.01	1.89-2.36
size	Pup joint L80-1 4 1/2" 11.6PPF BTC BOX x PIN 6m/pcs 114.3x6.35mm	taper (in/in)	tooth height(mm)	thread pitch(mm)	thread standoff(mm)
tolerance		0.061-0.066	1.57±0.0254	±0.05	0-2.54
actual measured		0.062-0.064	1.57-1.59	-0.01~+0.01	1.89-2.36
size	Pup joint L80-1 2 7/8" 6.5PPF EUE PIN x PIN 73.02x5.51mm 1m/pcs	taper (in/in)	tooth height(mm)	thread pitch(mm)	thread standoff(mm)
tolerance		0.059-0.066	1.81 (-0.1,+0.05)	±0.08	6.35±3.175
actual measured		0.062-0.064	1.80-1.59	-0.01~+0.01	4.98-5.45
size	Pup joint L80-1 2 7/8" 6.5PPF EUE PIN x PIN 73.02x5.51mm 1.5m/pcs	taper (in/in)	tooth height(mm)	thread pitch(mm)	thread standoff(mm)
tolerance		0.059-0.066	1.81 (-0.1,+0.05)	±0.08	6.35±3.175
actual measured		0.062-0.064	1.80-1.59	-0.01~+0.01	4.98-5.45
size	Pup joint L80-1 2 7/8" 6.5PPF EUE PIN x PIN 73.02x5.51mm 3m/pcs	taper (in/in)	tooth height(mm)	thread pitch(mm)	thread standoff(mm)
tolerance		0.059-0.066	1.81 (-0.1,+0.05)	±0.08	6.35±3.175
actual measured		0.062-0.064	1.80-1.59	-0.01~+0.01	4.98-5.45
size	Pup joint L80-1 2 7/8" 6.5PPF EUE PIN x PIN 73.02x5.51mm 6m/pcs	taper (in/in)	tooth height(mm)	thread pitch(mm)	thread standoff(mm)
tolerance		0.059-0.066	1.81 (-0.1,+0.05)	±0.08	6.35±3.175
actual measured		0.062-0.064	1.80-1.59	-0.01~+0.01	4.98-5.45
size	Pup joint L80-1 2 7/8" 6.5PPF EUE PIN x PIN 73.02x5.51mm 1m/pcs	taper (in/in)	tooth height(mm)	thread pitch(mm)	thread standoff(mm)
tolerance		0.059-0.066	1.81 (-0.1,+0.05)	±0.08	6.35±3.175
actual measured		0.062-0.064	1.80-1.59	-0.01~+0.01	4.98-5.45

The result of the threading checks was satisfactory.

4. Triangles checks. 20%



TÜV SÜD inspector have checked the Triangles, the details as table 1, A1 values, all the checked value were acceptable according the standard requirement.

5. .Concentricity (drift diameter) checks. 20%

TÜV SÜD inspector have checked the drift dimension before drift

-For 177.8x9.19mm, the drift OD > 156.24, length > 152mm,

-For 114.3x6.35mm the drift OD > 98.42mm, length > 152mm

-For 73.02x5.51mm the drift OD > 59.62mm, length > 106mm

Inspector randomly selected 20% and witnessed the drift process it can go through.

The result of Concentricity (drift diameter) checks was satisfactory.

6.Document review inspection

The inspector reviewed the document which were provided by the mill include the below reports

-MTC

All the reviewed report results were acceptable according to the standard requirement.

7.pipe length checks 20%

TÜV SÜD inspector witnessed the length of the casing pipes and pipe joints at 20%, the details as below:

size	Casing pipe L80-1 7" 26PPF BTC R3 177.8x9.19mm	length
actual measured		11300-11760mm
size	Casing pipe L80-1 4 1/2" 11.6PPF BTC 114.3x6.35mm	length
actual measured		10650-11720mm
size	Tubing L80-1 2 7/8" 6.5PPF EUE R2BTC 73x5.51mm	length
actual measured		9630-9670mm
size	Casing pipe L80-1 7" 26PPF BTC R3 177.8x9.19mm	length
actual measured		3000-3002mm
size	Casing pipe L80-1 7" 26PPF BTC R3 177.8x9.19mm	length
actual measured		6000-6002mm



size	Pup joint L80-1 4 1/2" 11.6PPF BTC BOX x PIN 0.5m/pcs	length
actual measured		500mm
size	Pup joint L80-1 4 1/2" 11.6PPF BTC BOX x PIN 1m/pcs	length
actual measured		1000mm
size	Pup joint L80-1 4 1/2" 11.6PPF BTC BOX x PIN 2m/pcs	length
actual measured		2000mm
size	Pup joint L80-1 4 1/2" 11.6PPF BTC BOX x PIN 3m/pcs	length
actual measured		3002mm
size	Pup joint L80-1 4 1/2" 11.6PPF BTC BOX x PIN 6m/pcs	length
actual measured		6002mm
size	Pup joint L80-1 2 7/8" 6.5PPF EUE PIN x PIN 73.02x5.51mm 1m/pcs	length
actual measured		1000mm
size	Pup joint L80-1 2 7/8" 6.5PPF EUE PIN x PIN 73.02x5.51mm 1.5m/pcs	length
actual measured		1502mm
size	Pup joint L80-1 2 7/8" 6.5PPF EUE PIN x PIN 73.02x5.51mm 3m/pcs	length
actual measured		3001mm
size	Pup joint L80-1 2 7/8" 6.5PPF EUE PIN x PIN 73.02x5.51mm 6m/pcs	length
actual measured		6003mm
size	Pup joint L80-1 2 7/8" 6.5PPF EUE PIN x PIN 73.02x5.51mm 1m/pcs	length
actual measured		1002mm

The result of pipe length checks was satisfactory.

8. Conclusion

All the inspection results were acceptable according to per standard API 5B and API 5CT requirement.

9. Photos



visual and marking inspection



visual and marking inspection



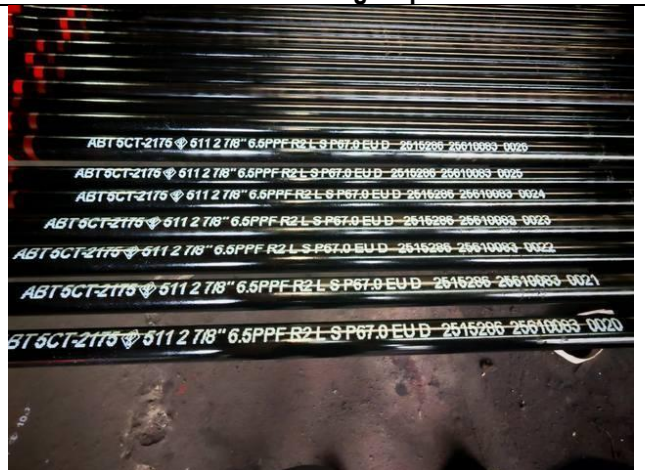
visual and marking inspection



visual and marking inspection



visual and marking inspection



visual and marking inspection



visual and marking inspection



visual and marking inspection



visual and marking inspection



visual and marking inspection



packing inspection



packing inspection



packing inspection



packing inspection



packing inspection



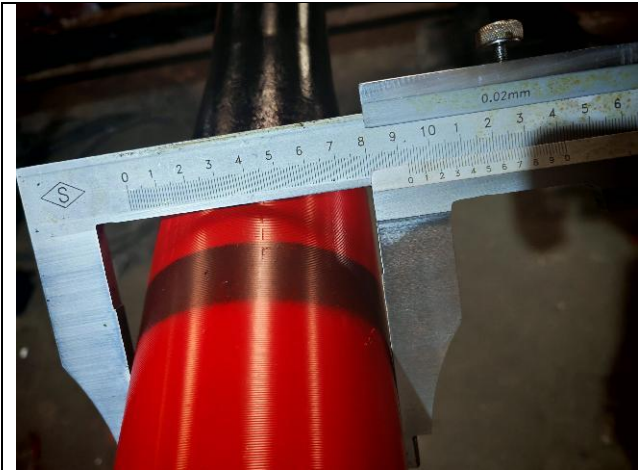
packing inspection



packing inspection



packing inspection



dimension inspection



dimension inspection



dimension inspection



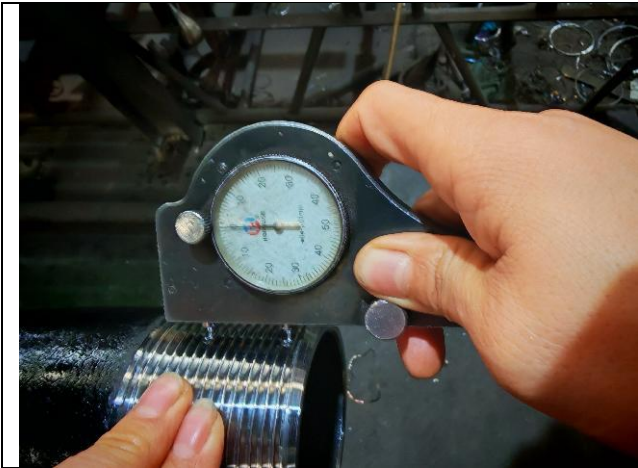
dimension inspection



dimension inspection



dimension inspection



dimension inspection



dimension inspection



dimension inspection



dimension inspection



dimension inspection



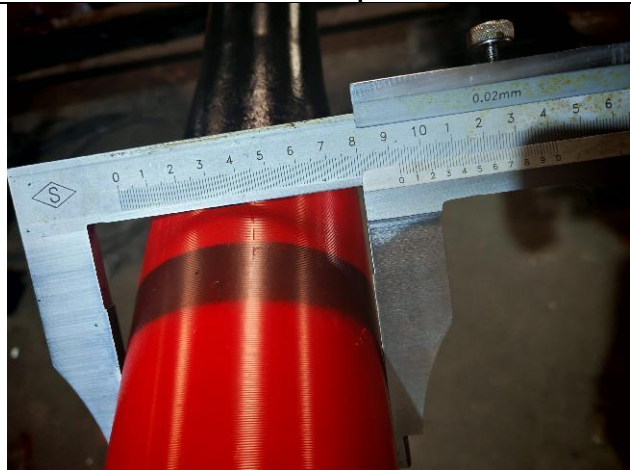
dimension inspection



dimension inspection



dimension inspection



dimension inspection



dimension inspection



dimension inspection



dimension inspection



dimension inspection



dimension inspection



dimension inspection



dimension inspection



drift test inspection



drift test inspection



Inspected by: Zhang Yonglin

Reviewed by: Wang Zhongxiang

Signature: *zhangyonglin*

Signature: *wang zhongxiang*

Date: 2025.12.18

Date: 2025.12.18