



INSPECTION REPORT

CIK-QMS-03-Rev.0

Page

1 of 22

Project	Pipe Inspection	Notification No.	N/A
Report No.	CIK-IR-Cangzhou-Abert-Pipe-20251221-22	PO No.	N/A

Vendor/Location	HEBEI ABTER STEEL PIPE CO., LTD	Person Contracted	Mr. Huang
Sub-vendor/Loc.	Cangzhou City, Hebei Province, China	Inspection Date	Dec. 21 st & 22 nd 2025
Delivery Date	N/A	Next Inspection Date	N/A

Inspected Item Description (As per PO/Contract/other References)

Item No	Description	Quantity
1	42 Off 1626mm O/D x 20mm Wall API5L Gr B/L275 SSAW Pipe x 4.5Mtr Long – Bevelled Ends, Self Colour Finish & Pipe Marking Internally	42PCS/189M
2	8 Off 32”Nb x 8mm Wall API5L Gr B/L275 SSAW Pipe x 6Mtr Long – Bevelled Ends, Self Colour Finish & Pipe Marking Internally	8PCS/48M
3	6 Off 56”Nb x 12.5mm Wall API5L Gr B/L275 SSAW Pipe x 6Mtr Long – Bevelled Ends & Clear Varnish Only Finish	6PCS/36M
4	10 Off 48”Nb Std Wt API5L Gr B/L275 LSAW Pipe x 6Mtr Long – Bevelled Ends & Black Painted Finish	10PCS/60M
5	25 Off 24”Nb Std Wt API5L Gr B/P265GH ERW Pipe x 6Mtr Long – Bevelled Ends & Black Painted Finish	25PCS/150M
6	25 Off 20”Nb Std Wt API5L Gr B/P265GH ERW Pipe x 6Mtr Long – Bevelled Ends & Black Painted Finish	25PCS/150M
7	20 Off 12”Nb Std Wt API5L Gr B/P265GH ERW Pipe x 6Mtr Long – Bevelled Ends & Black Painted Finish	20PCS/120M
8	56 Off 8”Nb Sch40 Wt API5L Gr B/P265GH ERW Pipe x 6Mtr Long – Bevelled Ends & Black Painted Finish	56PCS/336M
9	90 Off 6”Nb Sch40 Wt API5L Gr B/P265GH ERW Pipe x 6Mtr Long – Bevelled Ends & Black Painted Finish	90PCS/540M
10	76 Off 4”Nb Sch40 Wt API5L Gr B/P265GH ERW Pipe x 6Mtr Long – Bevelled Ends & Black Painted Finish	76PCS/456M
11	20 Off 16”Nb Sch20 Wt API5L Gr B/P265GH ERW Pipe x 6Mtr Long – Bevelled Ends & Clear Varnish Only Finish	20PCS/120M
12	60 Off 12”Nb Sch20 Wt API5L Gr B/P265GH ERW Pipe x 6Mtr Long – Bevelled Ends & Clear Varnish Only Finish	60PCS/360M
13	60 Off 10”Nb Sch20 Wt API5L Gr B/P265GH ERW Pipe x 6Mtr Long – Bevelled Ends & Clear Varnish Only Finish	60PCS/360M



INSPECTION REPORT

CIK-QMS-03-Rev.0

Page

2 of 22

Project	Pipe Inspection	Notification No.	N/A
Report No.	CIK-IR-Cangzhou-Abert-Pipe-20251221-22	PO No.	N/A

No.	Description	Quantity
	ed Ends & Clear Varnish Only Finish	
14	387 Off 8"Nb Sch20 Wt API5L Gr B/P265GH ERW Pipe x 6Mtr Long – Bevelled Ends & Clear Varnish Only Finish	387PCS/2322M
15	381 Off 1"Nb Sch40 ASTM A106 Gr B/P265GH Seamless Pipe x 6Mtr Long – Bevelled Ends & Black Painted Finish	381PCS/2286M
16	180 Off 1 ¼"Nb Sch40 ASTM A106 Gr B/P265GH Seamless Pipe x 6Mtr Long – Bevelled Ends & Black Painted Finish	180PCS/1080M
17	180 Off 1 ½"Nb Sch40 ASTM A106 Gr B/P265GH Seamless Pipe x 6Mtr Long – Bevelled Ends & Black Painted Finish	180PCS/1080M
18	300 Off 2"Nb Sch40 ASTM A106 Gr B/P265GH Seamless Pipe x 6Mtr Long – Bevelled Ends & Black Painted Finish	300PCS/1800M
19	74 Off 2 ½"Nb Sch40 ASTM A106 Gr B/P265GH Seamless Pipe x 6Mtr Long – Bevelled Ends & Black Painted Finish	74PCS/444M
20	192 Off 3"Nb Sch40 ASTM A106 Gr B/P265GH Seamless Pipe x 6Mtr Long – Bevelled Ends & Black Painted Finish	192PCS/1152M
21	152 Off 4"Nb Sch40 ASTM A106 Gr B/P265GH Seamless Pipe x 6Mtr Long – Bevelled Ends & Black Painted Finish	152PCS/912M
22	30 Off 5"Nb Sch40 ASTM A106 Gr B/P265GH Seamless Pipe x 6Mtr Long – Bevelled Ends & Black Painted Finish	30PCS/180M
23	60 Off 6"Nb Sch40 ASTM A106 Gr B/P265GH Seamless Pipe x 6Mtr Long – Bevelled Ends & Black Painted Finish	60PCS/360M
24	42 Off 8"Nb Sch40 ASTM A106 Gr B/P265GH Seamless Pipe x 6Mtr Long – Bevelled Ends & Black Painted Finish	42PCS/252M
25	50 Off 10"Nb Sch40 ASTM A106 Gr B/P265GH Seamless Pipe x 6Mtr Long – Bevelled Ends & Black Painted Finish	50PCS/300M
26	25 Off 12"Nb Std Wt ASTM A106 Gr B/P265GH Seamless Pipe x 6Mtr Long – Bevelled Ends & Black Painted Finish	25PCS/150M
27	20 Off 14"Nb Std Wt ASTM A106 Gr B/P265GH Seamless Pipe x 6Mtr Long – Bevelled Ends & Black Painted Finish	20PCS/120M
28	15 Off 16"Nb Std Wt ASTM A106 Gr B/P265GH Seamless Pipe x 6Mtr Long – Bevelled Ends & Black Painted Finish	15PCS/90M
29	10 Off 20"Nb Std Wt ASTM A106 Gr B/P265GH Seamless Pipe x 6Mtr Long – Bevelled Ends & Black Painted Finish	10PCS/60M



INSPECTION REPORT

CIK-QMS-03-Rev.0

Page

3 of 22

Project	Pipe Inspection	Notification No.	N/A
Report No.	CIK-IR-Cangzhou-Abert-Pipe-20251221-22	PO No.	N/A

30	10 Off 24"Nb Std Wt ASTM A106 Gr B/P265GH Seamless Pipe x 6Mtr Long – Bevelled Ends & Black Painted Finish	10PCS/60M
31	1"Nb Sch80 ASTM A106 Gr B/P265GH Seamless Pipe x 6Mtr Long – Bevelled Ends & Black Painted Finish	70PCS/420M
32	1 ½"Nb Sch80 ASTM A106 Gr B/P265GH Seamless Pipe x 6Mtr Long – Bevelled Ends & Black Painted Finish	60PCS/360M
33	2"Nb Sch80 ASTM A106 Gr B/P265GH Seamless Pipe x 6Mtr Long – Bevelled Ends & Black Painted Finish	40PCS/240M
34	15 Off 8"Nb Sch80 ASTM A106 Gr B/P265GH Seamless Pipe x 6Mtr Long – Bevelled Ends & Black Painted Finish	15PCS/90M

Inspection Result

 Accepted Conditional Discrepancy/NCR**Inspected by: Name/Date/Signature****Approved by: Name/Date/Signature**Zhao Jiang
Dec. 21st-22nd 2025

Inspection Activities according to the ITP No.

Item	ITP Activity No.	Activity Description	TPI Involvement
1	/	Quantity inspection	W
2	/	Visual inspection	SW
3	/	Dimension inspection	SW
4	/	Marking inspection	SW
5	/	Document review	R

Inspection Description

- As per PO and client requirements, the CHITAKO inspector arrived at Cangzhou factories to perform the final inspection for pipe on Dec. 21st-22nd 2025.
- The inspection content are including that the quantity inspection, visual inspection, dimension inspection, marking inspection and document review.



INSPECTION REPORT

CIK-QMS-03-Rev.0

Page

4 of 22

Project	Pipe Inspection	Notification No.	N/A
Report No.	CIK-IR-Cangzhou-Abert-Pipe-20251221-22	PO No.	N/A

- According to customer requirements, the inspection ratio is 5%.
- The inspection results were acceptable with comments.
- Details as follows:
 - **Quantity check.**
 - According to the check list, the inspector performed quantity check for the SMLS, ERW, SAWsteel pipe for each specification.
 - The actual quantity was consistent with the inspection list quantity.
 - The result was acceptable.
 - **Visual inspection at rate 5%**
 - According to the client request, CIK inspector checked pipes appearance under black paint and clear varnish condition according to the ASTM API 5L & ASTM A106.
 - The pipe outer and inner surface was smooth, no defect found, such as crack, scratch, porosity, pit etc.
 - The inspection result was acceptable with the below comment.
 - Comment-01: Some damage was found on item 1 pipe bevel surface.
 - **Dimensional check at rate 5%**
 - CIK inspector performed the dimensional check for the SMLS, ERW, SAWsteel pipe for each specification.



INSPECTION REPORT

CIK-QMS-03-Rev.0

Page

5 of 22

Project	Pipe Inspection	Notification No.	N/A
Report No.	CIK-IR-Cangzhou-Abert-Pipe-20251221-22	PO No.	N/A

- Before dimension inspection, all used tools were checked and found in good condition and calibrated.
- The dimension inspection result was acceptable with comment.
- Details as below:

(Unit: mm)

Item	OD	THK	Bevel angle ^o	Root face	Length
Req.	/	20±(1.5)	30-35	0.5-2.5	4500
1	1622-1633.5	18.9-19.1	30	1.2-2.5	4495-4526
Req.	813(±1.6)	8(±0.8)	(30-35)	(0.5-2.5)	(6000)
2	812.8-814	7.4-7.6	30	1.2-1.8	5985-5989
Req.	1422(±1.6)	12.5(±1.25)	(30-35)	(0.5-2.5)	(6000)
3	1421-1423	11.7-11.8	31	1.3-1.9	5981-5998
Req.	1216(±1.6)	9.53(±0.953)	(30-35)	(0.5-2.5)	(6000)
4	1217.1-1218.1	9.85-10.1	30	1.1-1.4	5983-5990
Req.	610(±1.6)	9.53(±0.953)	(30-35)	(0.5-2.5)	(6000)
5	610-611	9.1-9.3	33.22	1-1.3	5993-5999
Req.	508(±1.6)	9.53(±0.953)	(30-35)	(0.5-2.5)	(6000)
6	507.6-509.3	8.9-9.1	32.5	1.2-1.4	5992-5994
Req.	323.8(±1.6)	9.53(±0.953)	(30-35)	(0.5-2.5)	(6000)
7	323.9-325.4	9.2-9.4	33.5	1.5-2	5996-6001
Req.	219.1(±1.6)	8.18(±0.818)	(30-35)	(0.5-2.5)	(6000)
8	219-220	8-8.2	32.5	1.3-1.4	5996-5997
Req.	168.3(-0.4+1.6)	7.11(±0.711)	(30-35)	(0.5-2.5)	(6000)
9	168.2-168.5	6.9-7.1	32.8	1.2-1.3	5998-6000
Req.	114.3(-0.4+1.6)	6.02(±0.602)	(30-35)	(0.5-2.5)	(6000)
10	114.1-114.8	5.8-6.1	32	1.1-1.2	5997-5999
Req.	406.4(+2.4-0.8)	7.92(±0.792)	(30-35)	(0.5-2.5)	(6000)



INSPECTION REPORT

CIK-QMS-03-Rev.0

Page

6 of 22

Project	Pipe Inspection	Notification No.	N/A
Report No.	CIK-IR-Cangzhou-Abert-Pipe-20251221-22	PO No.	N/A

11	405.1-407.1	7.4-7.6	33	1.2-1.6	5995-5996
Req.	323.8(+2.4-0.8)	6.35(±0.635)	(30-35)	(0.5-2.5)	(6000)
12	323.7-324.6	6.1-6.3	33	1.5-1.7	5993-5997
Req.	273(+2.4-0.8)	6.35(±0.635)	(30-35)	(0.5-2.5)	(6000)
13	273.2-274	6-6.2	32	1.2-1.6	6002-6005
Req.	219.1(+1.6-0.8)	6.35(±0.635)	(30-35)	(0.5-2.5)	(6000)
14	218.8-219.2	6-6.2	32.5	1.6-2	5990-5993
Req.	33.4(±0.4)	(>3.38*0.875)	(30-35)	(0.5-2.5)	(6000)
15	33.3-33.6	3.3-3.6	34	0.9-1.3	6010
Req.	42.2(±0.4)	(>3.56*0.875)	(30-35)	(0.5-2.5)	(6000)
16	42-42.3	3.5-3.8	32	0.9-1.3	6008-6010
Req.	48.3(±0.4)	(>3.68*0.875)	(30-35)	(0.5-2.5)	(6000)
17	48.2-48.6	3.5-3.8	32	1-1.1	6008-6010
Req.	60.3(±0.8)	(>3.91*0.875)	(30-35)	(0.5-2.5)	(6000)
18	60-60.6	3.9-4.2	32	1.5-1.7	6005-6008
Req.	73(±0.8)	(>5.16*0.875)	(30-35)	(0.5-2.5)	(6000)
19	73.3-73.6	4.9-5.2	32.5	1-1.5	5995-5996
Req.	88.9(±0.8)	(>5.49*0.875)	(30-35)	(0.5-2.5)	(6000)
20	88.9-89	5.6-5.9	32.5	1.2-1.5	5995-5998
Req.	114.3(±0.8)	(>6.02*0.875)	(30-35)	(0.5-2.5)	(6000)
21	114-114.6	6-6.3	33	1.5-2	5994-5999
Req.	141.3(+1.6-0.8)	(>6.55*0.875)	(30-35)	(0.5-2.5)	(6000)
22	141.2-141.4	6.4-6.9	31.5	1.5-1.6	6009-6010
Req.	168.3(+1.6-0.8)	(>7.11*0.875)	(30-35)	(0.5-2.5)	(6000)
23	168.4-168.7	6.8-7.2	31	1.6-2.1	6008-6011
Req.	219.1(+1.6-0.8)	(>8.18*0.875)	(30-35)	(0.5-2.5)	(6000)
24	218.9-219	8.1-8.7	31.5	1.1-1.4	6009-6010
Req.	273(+2.4-0.8)	(>9.27*0.875)	(30-35)	(0.5-2.5)	(6000)



INSPECTION REPORT

CIK-QMS-03-Rev.0

Page

7 of 22

Project	Pipe Inspection	Notification No.	N/A
Report No.	CIK-IR-Cangzhou-Abert-Pipe-20251221-22	PO No.	N/A

25	273-273.9	9-9.7	31	1.7-2.1	5999-6003
Req.	323.8(+2.4-0.8)	(>9.53*0.875)	(30-35)	(0.5-2.5)	(6000)
26	324.3-325.3	9-9.2	33.5	1-1.8	6001-6005
Req.	355.6(+2.4-0.8)	(>9.53*0.875)	(30-35)	(0.5-2.5)	(6000)
27	355.3-356.9	9.2-9.7	34	1.4-1.6	5997-6005
Req.	406.4(+2.4-0.8)	(>9.53*0.875)	(30-35)	(0.5-2.5)	(6000)
28	407-407.6	9.4-9.9	33.5	1.5-1.7	6004-6005
Req.	508(+3.2-0.8)	(>9.53*0.875)	(30-35)	(0.5-2.5)	(6000)
29	508.1-509.2	9.4-10.1	34.5	1.5-1.8	5995-5996
Req.	610(+3.2-0.8)	(>9.63*0.875)	(30-35)	(0.5-2.5)	(6000)
30	610.5-611	9.4-10.1	34	1-1.2	5994-5998
Req.)33.4(±0.4)	(>4.55*0.875)	(30-35)	(0.5-2.5)	(6000)
31	33.1-33.3	4.5-4.7	34.5	1-1.3	6010
Req.	48.3(±0.4)	(>5.08*0.875)	(30-35)	(0.5-2.5)	(6000)
32	48-48.3	4.7-4.8	31	1.1-1.5	6007-6009
Req.	60.3(±1.6)	(>5.54*0.875)	(30-35)	(0.5-2.5)	(6000)
33	60-60.8	5.3-5.8	34	1.7-1.8	6010
Req.	219.1(+1.6-0.8)	(>12.7*0.875)	(30-35)	(0.5-2.5)	(6000)
34	218.9-219.5	12.2-12.5	32	1.7-2	5998-6000
Req.	33.4(±0.4)	(>3.38*0.875)	(30-35)	(0.5-2.5)	(6000)
35	33.3-33.6	3.3-3.6	34	0.9-1.3	6010

- Comment-02: For the item1, the API 5L standard did not specify OD's>1422mm diameter tolerance, needs to be confirmed by client.
- Comment-03: Due to the measuring tool being limited, so the weld seam height cloud not be checked.



INSPECTION REPORT

CIK-QMS-03-Rev.0

Page

8 of 22

Project	Pipe Inspection	Notification No.	N/A
Report No.	CIK-IR-Cangzhou-Abert-Pipe-20251221-22	PO No.	N/A

➤ **Marking check at rate 5%**

- As the request of client's instruction, CIK inspector performed marking inspection for SMLSsteel pipe, the steel pipe marking by paint spray on the pipe body,
- The result was acceptable.
- Detail identification as follow:

Item	Marking content
1	API Logo HLT API5L GR B / L275 PSL1 SSAW 1626MM x 20MM x 4.5MTR HEATNO:2540509 1 APS
2	API Logo HLT API5L GR B / L275 PSL1 SSAW 813MM x 8MM x 6MTR HEAT NO: G25104710 APS
3	API Logo HLT API5L GR B / L275 PSL1 SSAW 1422MM x 12.5MM x 6MTR HEATNO:G251123 12 APS
4	API Logo HAIQIANWEI API5L GR.B/L275 PSL1 LSAW 1219MM×9.53MM×6MTR HEAT NO:25110 12 ASP
5	API Logo CHANGFENG API5L GR B / P265GH PSL1 ERW 610MM x 9.53MM x 6MTR HEAT NO: 25306144 APS
6	API Logo CHANGFENG API5L GR B / P265GH PSL1 ERW 508MM x 9.53MM x 6MTR HEAT NO:X25209198 APS
7	API Logo CHANGFENG API5L GR B / P265GH PSL1 ERW 323.8MM x 9.53MM x 6MTR HEAT NO:X25405870 APS
8	API Logo CHANGFENG API5L GR B / P265GH PSL1 ERW 219.1MM x 8.18MM x 6MTR HEAT NO:G24313297 APS
9	API Logo CHANGFENG API5L GR B / P265GH PSL1 ERW 168.3MM x 7.11MM x 6MTR HEAT NO:G25014482 APS
10	API Logo CHANGFENG API5L GR B / P265GH PSL1 ERW 114.3MM x 6.02MM x 6MTR HEAT NO:G25113730 APS
11	API Logo CHANGFENG API5L GR B / P265GH PSL1 ERW 406.4MM x 7.92MM x 6MTR HEAT NO:X25402187 APS
12	API Logo CHANGFENG API5L GR B / P265GH PSL1 ERW 323.8MM x 6.35MM x 6MTR HEAT



INSPECTION REPORT

CIK-QMS-03-Rev.0

Page

9 of 22

Project	Pipe Inspection	Notification No.	N/A
Report No.	CIK-IR-Cangzhou-Abert-Pipe-20251221-22	PO No.	N/A

	NO: X25011306 APS
13	API Logo CHANGFENG API5L GR B / P265GH PSL1 ERW 273MM x 6.35MM x 6MTR HEAT NO: 25101342 APS
14	API Logo CHANGFENG API5L GR B / P265GH PSL1 ERW 219.1MM x 6.35MM x 6MTR HEAT NO: G25223104 APS
15	API Logo ASME A/SA 106 GR B / P265GH PSL1 SMLS 33.4MM x 3.38MM x 6MTR HEAT N O: LZ25051442 APS
16	API Logo ASME A/SA 106 GR B / P265GH PSL1 SMLS 42.2MM x 3.56MM x 6MTR HEAT N O: ZD25035412 APS
17	API Logo ASME A/SA 106 GR B / P265GH PSL1 SMLS 48.3MM x 3.68MM x 6MTR HEAT N O: LZ25011402 APS
18	API Logo ASME A/SA 106 GR B / P265GH PSL1 SMLS 60.3MM x 3.91MM x 6MTR HEAT N O: 25330721 APS
19	API Logo ASME A/SA 106 GR B / P265GH PSL1 SMLS 73MM x 5.16MM x 6MTR HEAT N O: 25074125 APS
20	API Logo ASME A/SA 106 GR B / P265GH PSL1 SMLS 88.9MM x 5.49MM x 6MTR HEAT NO: 25321221 APS
21	API Logo ASME A/SA 106 GR B / P265GH PSL1 SMLS 114.3MM x 6.02MM x 6MTR HEAT NO:25305131 APS
22	API Logo ASME A/SA 106 GR B / P265GH PSL1 SMLS 141.3MM x 6.55MM x 6MTR HEAT N O: 25702166 APS
23	API Logo ASME A/SA 106 GR B / P265GH PSL1 SMLS 168.3MM x 7.11MM x 6MTR HEAT NO: 25212113 APS
24	API Logo ASME A/SA 106 GR B / P265GH PSL1 SMLS 219.1MM x 8.18MM x 6MTR HEAT NO:25101201 APS
25	API Logo ASME A/SA 106 GR B / P265GH PSL1 SMLS 273MM x 9.27MM x 6MTR HEAT N O:25101231 APS
26	API Logo ASME A/SA 106 GR B / P265GH PSL1 SMLS 323.8MM x 9.53MM x 6MTR HEAT NO: 25092413 APS
27	API Logo ASME A/SA 106 GR B / P265GH PSL1 SMLS 355.6MM x 9.53MM x 6MTR HEAT NO: 25112331 APS
28	API Logo ASME A/SA 106 GR B / P265GH PSL1 SMLS 406.4MM x 9.53MM x 6MTR HEAT



INSPECTION REPORT

CIK-QMS-03-Rev.0

Page

10 of 22

Project	Pipe Inspection	Notification No.	N/A
Report No.	CIK-IR-Cangzhou-Abert-Pipe-20251221-22	PO No.	N/A

	NO: 25102142 APS
29	API Logo ASME A/SA 106 GR B / P265GH PSL1 SMLS 508MM x 9.53MM x 6MTR HEAT N O:25324353 APS
30	API Logo ASME A/SA 106 GR B / P265GH PSL1 SMLS 610MM x 9.53MM x 6MTR HEAT N O: 25603269 APS
31	API Logo ASME A/SA 106 GR B / P265GH PSL1 SMLS 33.4MM x 4.55MM x 6MTR HEAT NO: LZ25051040 APS
32	API Logo ASME A/SA 106 GR B / P265GH PSL1 SMLS 48.3MM x 5.08MM x 6MTR HEAT NO: LZ25091400 APS
33	API Logo ASME A/SA 106 GR B / P265GH PSL1 SMLS 60.3MM x 5.54MM x 6MTR HEAT NO: 25084312 APS
34	API Logo ASME A/SA 106 GR B / P265GH PSL1 SMLS 219.1MM x 12.7MM x 6MTR HEAT NO:25105231 APS

➤ **Document review**

- The factory did not provide any documents for the inspector to review.

Referenced Documents/Procedures/Standards

No.	Document Title	Document No. and Revision	Document Status
1	API 5L	Pipe line	Applicable
2	ASTM A106	Standard Specification for Seamless Carbon Steel Pipe for High-Temperature Service	Applicable

Instruments/Tools Used

No.	Instrument Name	Serial No./Tag No.	Calibration No.	Expire Date
1	Vernier caliper(0-300mm)	10054179	252014250208003	2026.02.08
2	Vernier caliper(0-600mm)	10052194	252014250208004	2026.02.08



INSPECTION REPORT

CIK-QMS-03-Rev.0

Page

11 of 22

Project	Pipe Inspection	Notification No.	N/A
Report No.	CIK-IR-Cangzhou-Abert-Pipe-20251221-22	PO No.	N/A

3	Steel tape(0-15m)	AY02206	252014250208006	2026.02.08
4	Steel tape(0-10m)	AY021004	252014250208009	2026.02.08
5	Thickness gauge	HL140126	252014250208010	2026.02.08
6	Bevel angle ruler(0-320)	2214547	252014250208002	2026.02.08

Documents Reviewed

No.	Document Title	Document No. and Revision	Remarks
1	Calibration certificates		/

Discrepancies/Non-Conformities

- Comment-01: Some damage was found on item 1 pipe bevel surface.
- Comment-02: For the item1, the API 5L standard did not specify OD's>1422mm diameter tolerance, needs to be confirmed by client.
- Comment-03: Due to the measuring tool being limited, so the weld seam height could not be checked.
- Comment-04: The factory did not provide any documents for the inspector to review.

Attachments

No.	Document Title	Document No. and Revision	No. of Pages
1	Calibration certificates	/	

Inspection Time and Mileage

Inspection Time	16hours	Mileage (Km)	240km
-----------------	---------	--------------	-------

Photos



INSPECTION REPORT

CIK-QMS-03-Rev.0

Page

12 of 22

Project	Pipe Inspection	Notification No.	N/A
Report No.	CIK-IR-Cangzhou-Abert-Pipe-20251221-22	PO No.	N/A



Quantity inspection



Quantity inspection



Quantity inspection



Quantity inspection



INSPECTION REPORT

CIK-QMS-03-Rev.0

Page

13 of 22

Project	Pipe Inspection	Notification No.	N/A
Report No.	CIK-IR-Cangzhou-Abert-Pipe-20251221-22	PO No.	N/A



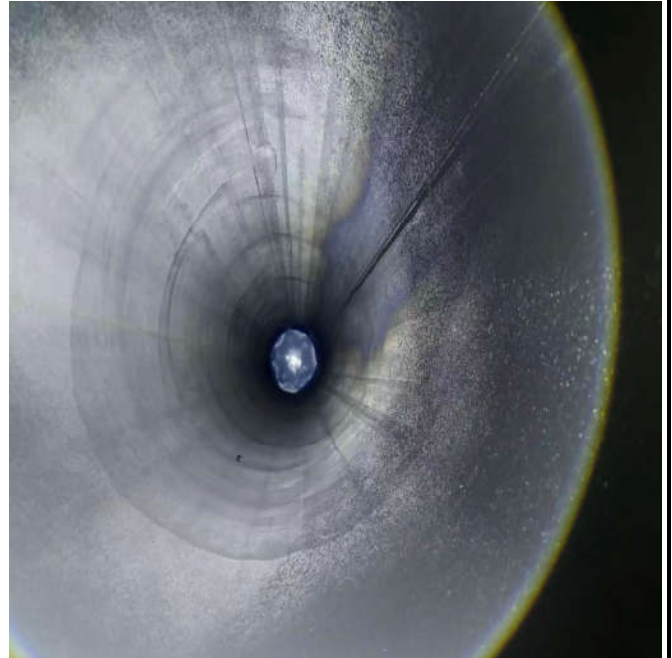
Quantity inspection



Quantity inspection



Quantity inspection



Quantity inspection



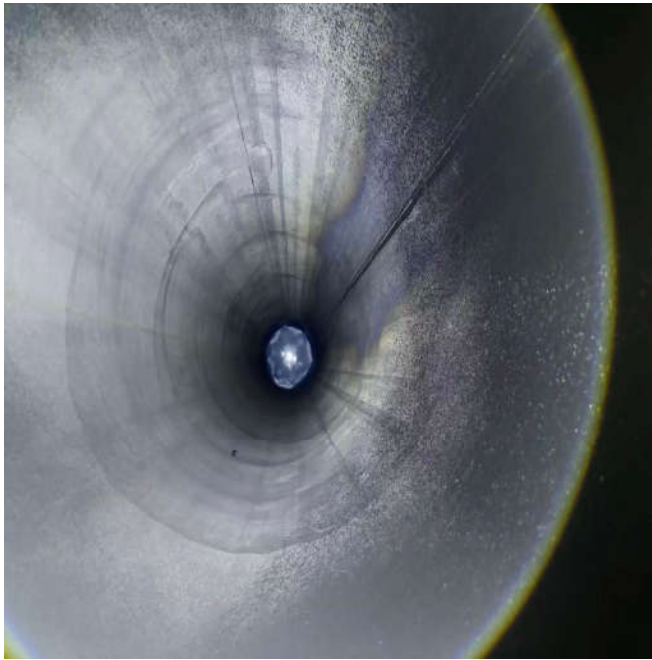
INSPECTION REPORT

CIK-QMS-03-Rev.0

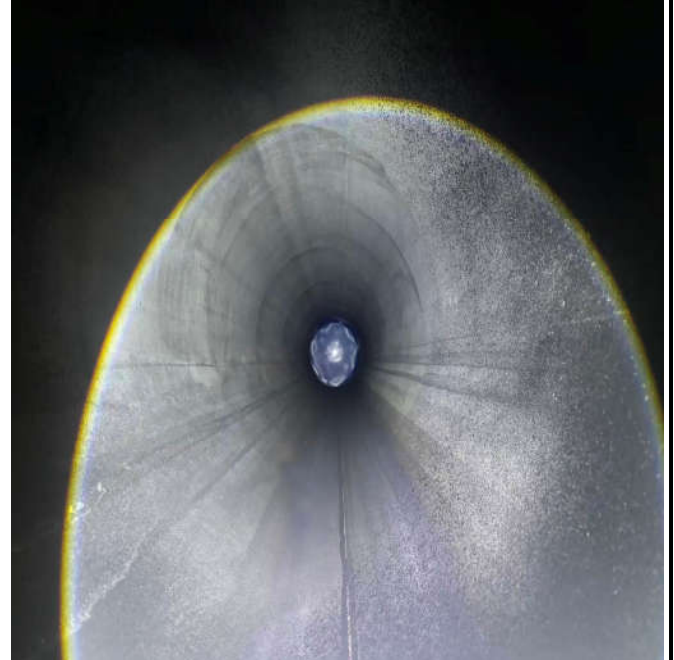
Page

14 of 22

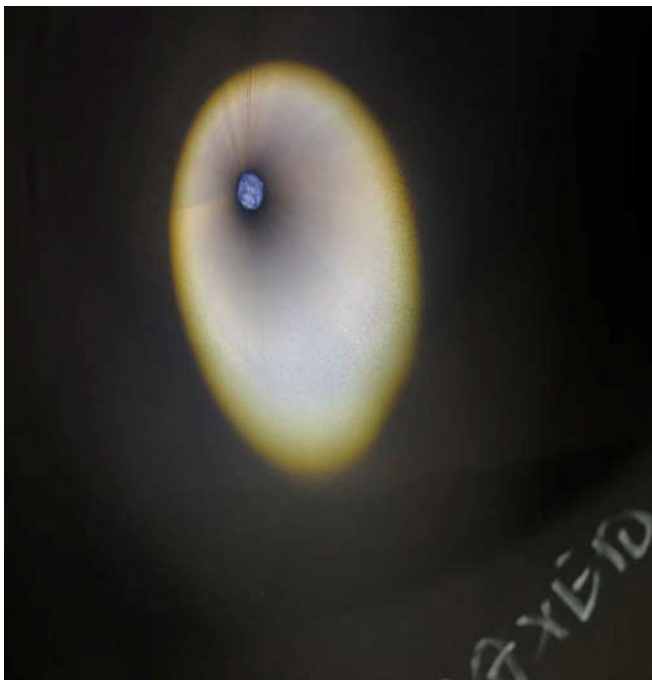
Project	Pipe Inspection	Notification No.	N/A
Report No.	CIK-IR-Cangzhou-Abert-Pipe-20251221-22	PO No.	N/A



Visual inspection



Visual inspection



Visual inspection



Visual inspection



INSPECTION REPORT

CIK-QMS-03-Rev.0

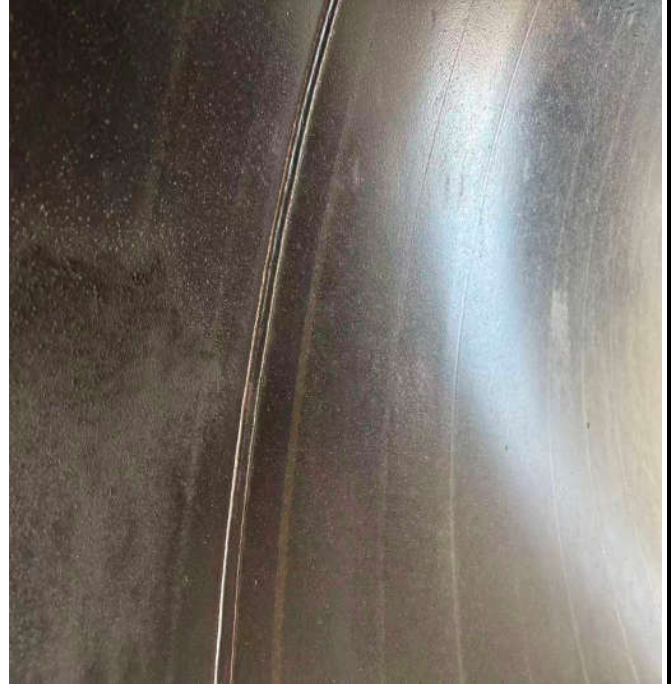
Page

15 of 22

Project	Pipe Inspection	Notification No.	N/A
Report No.	CIK-IR-Cangzhou-Abert-Pipe-20251221-22	PO No.	N/A



Visual inspection



Visual inspection



Visual inspection



Visual inspection



INSPECTION REPORT

CIK-QMS-03-Rev.0

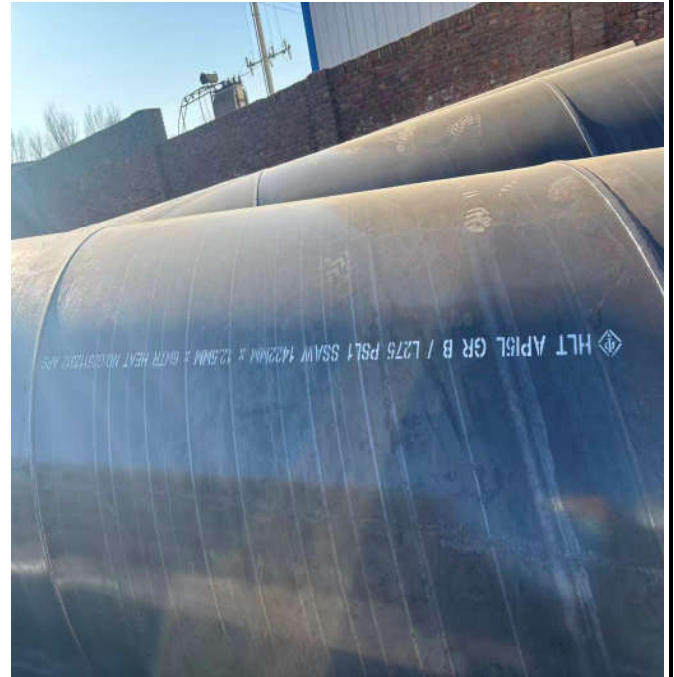
Page

16 of 22

Project	Pipe Inspection	Notification No.	N/A
Report No.	CIK-IR-Cangzhou-Abert-Pipe-20251221-22	PO No.	N/A



Marking inspection



Marking inspection



Marking inspection



Marking inspection



INSPECTION REPORT

CIK-QMS-03-Rev.0

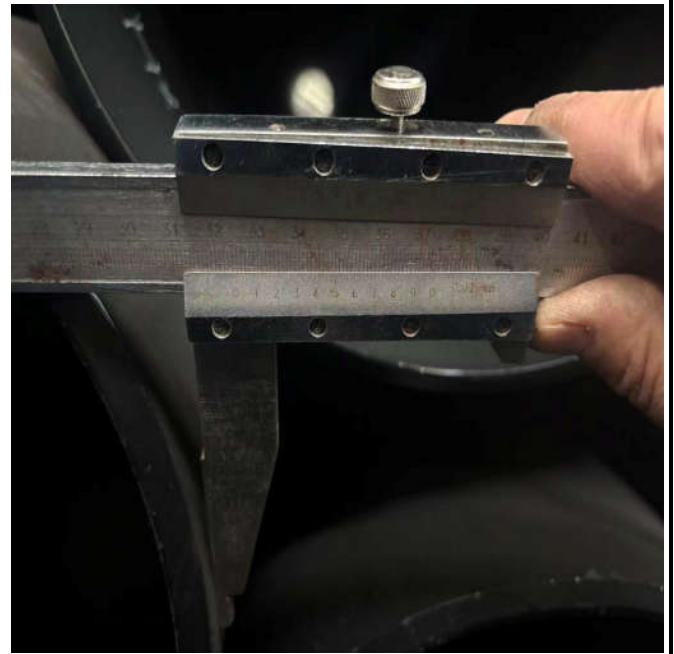
Page

17 of 22

Project	Pipe Inspection	Notification No.	N/A
Report No.	CIK-IR-Cangzhou-Abert-Pipe-20251221-22	PO No.	N/A



Dimension inspection



Dimension inspection



Dimension inspection



Dimension inspection



INSPECTION REPORT

CIK-QMS-03-Rev.0

Page

18 of 22

Project

Pipe Inspection

Notification No.

N/A

Report No.

CIK-IR-Cangzhou-Abert-Pipe-20251221-22

PO No.

N/A



Dimension inspection



Dimension inspection



Marking inspection



Marking inspection



INSPECTION REPORT

CIK-QMS-03-Rev.0

Page

19 of 22

Project	Pipe Inspection	Notification No.	N/A
Report No.	CIK-IR-Cangzhou-Abert-Pipe-20251221-22	PO No.	N/A



Dimension inspection



Dimension inspection



Dimension inspection



Dimension inspection

Project	Pipe Inspection	Notification No.	N/A
Report No.	CIK-IR-Cangzhou-Abert-Pipe-20251221-22	PO No.	N/A



Dimension inspection



Dimension inspection



Dimension inspection



Dimension inspection

Project	Pipe Inspection	Notification No.	N/A
Report No.	CIK-IR-Cangzhou-Abert-Pipe-20251221-22	PO No.	N/A



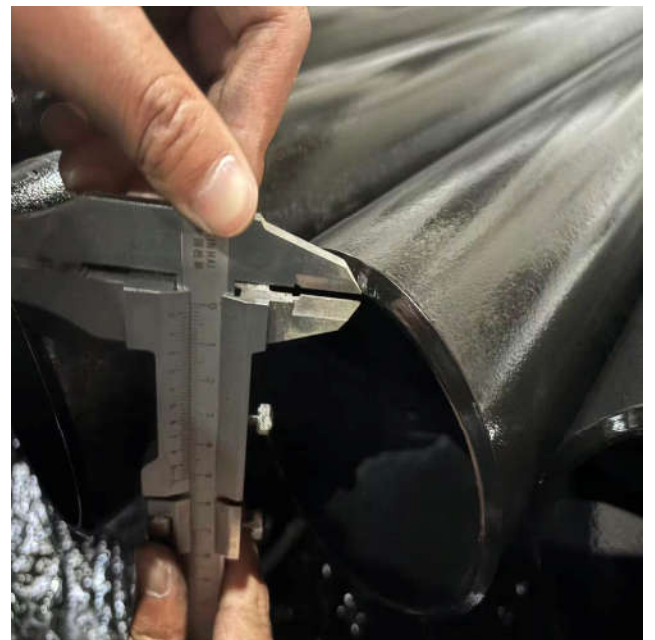
Dimension inspection



Dimension inspection



Dimension inspection



Dimension inspection



INSPECTION REPORT

CIK-QMS-03-Rev.0

Page

22 of 22

Project	Pipe Inspection	Notification No.	N/A
Report No.	CIK-IR-Cangzhou-Abert-Pipe-20251221-22	PO No.	N/A



Some iron filings and debris



Dimension inspection



Bevel damage



Bevel damage

---THE END---